

## Responsive Patient Care: Specialist Bariatric Equipment in Combination with Medstrom Now Service to Deliver Appropriate & Immediate Patient Support

- ↓ **Reduced waiting time for appropriate equipment**
- ↑ **Improved respiration and in-bed patient positioning**
- ↑ **Improved 'step-up' 'step-down' process to establish hospital to home pathway**

### Introduction

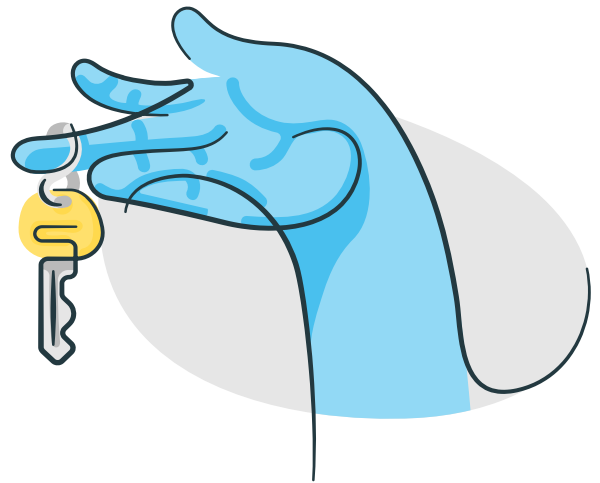
Neil (aged 47) was admitted to hospital after contracting COVID-19. Neil weighed 127kg on admission and had the following clinical conditions:

- Coronary Artery Disease
- Type II Diabetes
- Frequent bouts of pneumonia

Prior to admission, Neil's mobility was deemed as poor and he was bed-bound, unable to mobilise.

On admission, Neil had diabetic ulcers to legs and feet, and due to lack of mobility was at incredibly high risk of acquiring further skin damage.

*\*Neil is not the patient's real name*



### Clinical Challenges

Neil was originally admitted to A&E with breathing difficulties after being infected by COVID-19. The hospital Neil was admitted to had the advantage of a Medstrom Now set-up.

Medstrom Now is a unique and ethical rental solution which allows immediate access to specialist equipment when it is needed the most. Available from a dedicated on-site location, delivery lead times are eliminated entirely; guaranteeing clean, safety-and-function-tested equipment is available for the right patient at the right time. As a result, Neil received the most suitable equipment to support his care pathway.

In a report by John Wiley & Sons (2011), it was noted "lack of physical equipment and technical resources to deliver care to the plus-size patient, further compounds the situation and impedes the professional's ability to provide best practice care"<sup>1</sup>. The lack of appropriate equipment can also exacerbate anxiety for plus-size patients and can even delay their admission to a ward environment whilst awaiting delivery of appropriately sized products.

## Patient Objectives

- Achieve “Medically Fit for Discharge” status.
- Increase mobility to achieve standing without support and facilitate walking with mobility aids.

## Introduction of Medstrom’s Bariatric Equipment Package

Due to the innovative Medstrom Now set-up at Neil’s hospital, he was originally nursed on TurnCair 1000 and Bari10A.

**Bari10A Bed:** The Bari10A bed has a safe working load of 475kg and the platform sections widen individually, giving a maximum platform width of 122cm (compared to approximately 90cm for a standard hospital bed). This provides extra space for the patient, but also means caregivers can shorten a section if they want to get closer to the patient to deliver care. This, along with the bed’s top height of 86cm, makes caring for the patient safer and easier, reducing injury risks.



A one-button cardiac chair enabled Neil to sit up, offering physical benefits. A bed which achieves a full cardiac chair position helps to counter complications of immobility and can provide an important psychological boost for a non-sedated bed-bound patient. Sitting in a chair position helps with lung expansion, which will be particularly important for Neil due to his difficulty with breathing. The one-button cardiac chair also improves cardiac output and gravitational drainage and makes eating and drinking easier<sup>2</sup>.

**TurnCair 1000 Low Air Loss Surface:** The lateral rotation feature of TurnCair 1000 offers benefits for patients who are immobile and at an increased risk of associated respiratory complications, like Neil. The gentle timed rotational cycle is easily tolerated and will mobilise secretions preventing them from pooling and becoming a focus for infection.

In patients with existing respiratory conditions the rotational cycle will help to promote pulmonary drainage, and help to improve outcomes. Rotation can be achieved both in the supine position and the semi-recumbent position ensuring comfort at all times, even during treatment. In addition to the respiratory benefits, the TurnCair 1000 TurnAssist feature can also support staff with easier manual handling.

---

After spending time on the Bari10A Bed and TurnCair 1000, Medstrom’s Bariatric Specialist visited Neil and his caregivers. It was decided due to his diabetic wounds not healing on the legs that the TurnCair 1000 would be swapped for the Dolphin Therapy Extra-Wide fluid immersion simulation surface. At the same time, Medstrom’s Bariatric Specialist wanted to start encouraging mobilisation so advised the bed frame to be swapped for the MMO 8000

**Dolphin Therapy Extra-Wide Surface:** Dolphin Therapy Extra-Wide offers fluid immersion simulation that is evidenced<sup>3</sup> to support complex patients with the prevention and treatment of complex wounds. Due to the simulated fluid environment, patients can benefit from maintenance of tissue symmetry and tissue perfusion as it enables full immersion and envelopment, significantly reducing pressure, shear and tissue deformation. As a result, wounds still receive blood supply, even when nursed directly on the site, and accelerated wound healing can be achieved.

**MMO 8000 Bed:** The MMO 8000 with an ultra-low height of 21cm was selected to promote mobility and encourage Neil with the early stages of standing up. Based on clinical evidence<sup>4</sup>, an ultra low height of 21cm provides an optimum mobilisation height for 99% of males. At a width of 110cm, it also allowed enough space for caregivers to facilitate repositioning.

Once Neil's COVID infection had started to improve, the physios began rehabilitation. During this time, Neil's leg ulcers had started to heal on Dolphin Therapy and it was decided to 'step down' to TurnCair 1000 to allow staff to provide 'hands off repositioning', whilst also ensuring he receives pressure area care from TurnCair's low air loss therapy. Medstrom's Bariatric Product Specialist also advised on mobility aids to assist in rehabilitation and a **Bariatric Rotunda, Bariatric Static Chair** and a **Bariatric Commode** was also installed to complement his bed and surface and further encourage mobility.

## Summary

After successful placement on the Medstrom portfolio of bariatric products and involvement from physios, Neil was able to mobilise and had all his objectives achieved, including a full recovery from COVID-19. Medstrom's Bariatric Product Specialist Concluded:

**“Having access to Medstrom Now was of great benefit to this patient** as it allowed him to be on the correct equipment from the moment he was admitted to A&E. In the case of Neil, it was even more advantageous as he was COVID-19 positive and having the specialist equipment on-site meant he could be isolated within the ward environment straight away, **rather than having to wait for equipment to be delivered**. Neil is another example of a patient who benefited from the vast array of equipment Medstrom have to offer. Especially the support surface selection, as using the TurnCair 1000 and Dolphin Therapy Extra-Wide on a **‘step-up’ and ‘step-down’ basis allowed us to support Neil’s ulcers to heal.**”



**Immediate Rehabilitation**



**Enhanced Mobility**



**Increased Independence**

**To discover more about Medstrom's range of solutions for dignified plus-size patient care and enhanced support for caregivers, contact Medstrom's Bariatric Product Specialists 24/7/365 on:**

**UK: 0845 371 1717 or [info@medstrom.co.uk](mailto:info@medstrom.co.uk) IRE: 01 686 9487 or [info@medstrom.ie](mailto:info@medstrom.ie)**

## References:

1. John and Wiley Sons Ltd (2011) Health Expectations, 16, pp. 119-142.
2. Dean E 'The effect of positioning and mobilisation on oxygen transport' in Pryor JA and Webber BA (eds) Physiotherapy for respiratory and cardiac problems: Adults and paediatrics (Third edition) Churchill Livingstone 2002 ISBN 978 0 443 07075
3. Medstrom (2021) Dolphin Therapy 2000 patient outcomes.
4. Martindale D (2021). Calculating bed height for hospital patients using popliteal measurement. Nursing Times [online]; 117: 10