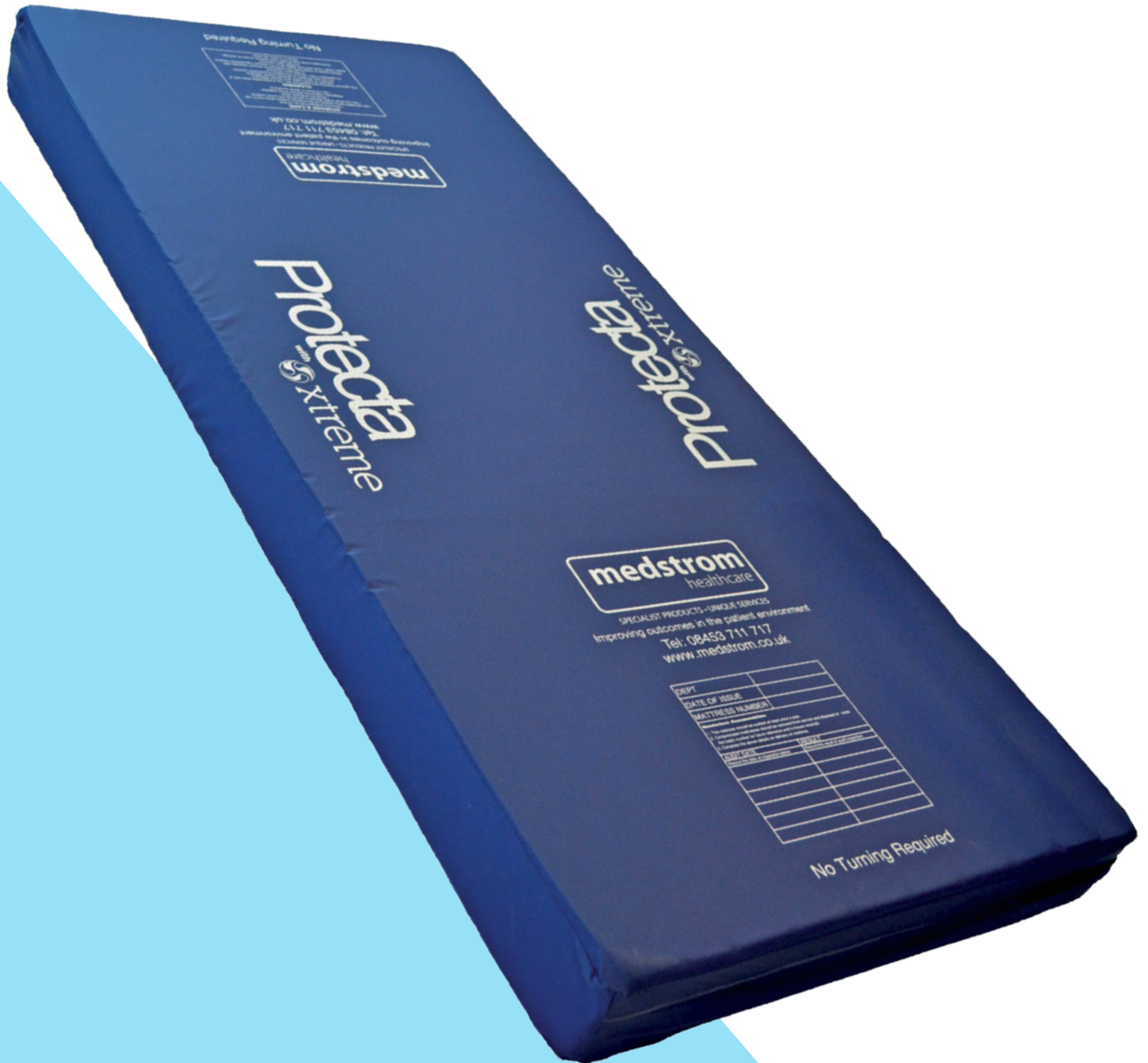


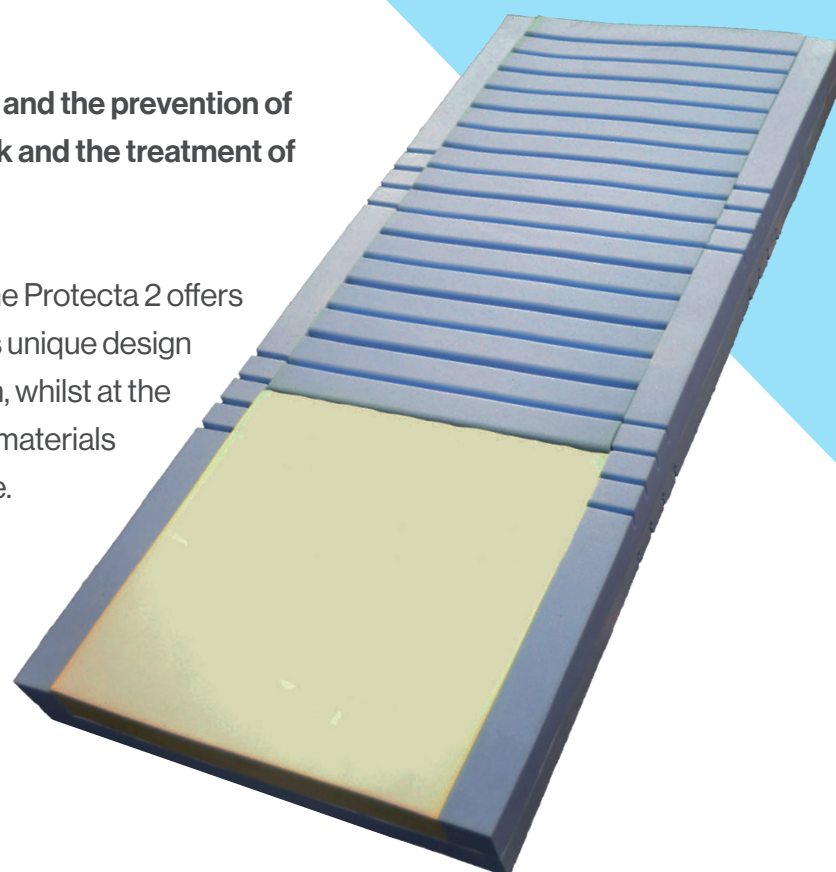
Protecta 2



Protecta 2

The Protecta range is indicated for comfort and the prevention of pressure ulcers in patients at all levels of risk and the treatment of category I and II pressure ulcers.

Combining both clinical and cost initiatives, the Protecta 2 offers an effective solution to a foam mattress. It has unique design features that enhance pressure redistribution, whilst at the same time made with durable and innovative materials that can significantly extend product life cycle.



Xtreme Covers

The Protecta 2 is equipped with the well-recognised and innovative Xtreme branding of covers. The Xtreme covers provide a durable cover that has the following above industry standard attributes:

- Multi-stretch to absorb shear forces and therefore reduces any shear and friction forces at the skin-surface interface.
- Moisture vapour permeable with anti-fungal agents to not only assist with patient micro-climate but also withstand decontamination procedures.
- Fully high frequency welded with deep flaps covering all zips, creating impenetrable barrier to bacteria, as well as eliminating the risk of fluid ingress.
- Chlorine resistant and latex free. The cover is compatible with 10,000ppm sodium hypochlorite solution and cleaning instructions are clearly visible on the cover.

Did You Know?

Up to 20% of a foam mattress fleet has to be condemned per annum due to strike-through. This is where fluid ingress has gone through the surface and contaminated the foam.

Uniquely, due to the Platilon® inner cover the foam receives added protection against ingress and therefore can reduce the number of mattresses needing to be condemned, improving governance with improved infection prevention and providing significant cost savings.

Foam Mattress Audits

As part of our service package for our contract customers we offer an annual foam mattress audit conducted by our highly experienced audit team.

During the audit, foam mattresses found to be contaminated are immediately replaced and condemned mattresses removed. Data is captured at point of audit on iPads, which enables prompt and accurate reporting back to the Trust.

Contact us today to discuss how our audit management expertise can benefit your institution.

“
This was the most well-planned audit of this magnitude that I have ever witnessed in the 32 years I have worked for the NHS.
”

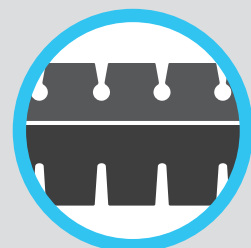
**Nick Howlett,
Health and Safety Services Manager,
University Hospitals of Leicester
NHS Trust**



Triple density, high-resilience foam distributing load evenly throughout the mattress.



Geltex® heel layer increases conformity in vulnerable pressure areas, enabling greater immersion, comfort & pressure redistribution.



Anti-shear, dual hinge base allows greater contouring when the bed articulates, improving comfort and reducing shear forces.



Firm edge perimeter assists with patient transfers, creating a durable platform to facilitate easier mobilisation.



Platilon® inner cover gives added protection to the foam in the event of ingress extending product longevity.



The Protecta 2 requires no turning due to its unique construction, again extending product life.

Technical Specification:

Mattress dimensions:	1980mm (L) x 850mm (W) x 140mm (D)
Weight limit:	190kg (30st)
Warranty:	4 years for the foam core, 1 year for the cover
Mattress weight:	14kg
Foam densities:	SB54120 at the head and sacral section. G52080 at the heel section. This includes Geltex, a softer density to protect the vulnerable heel section. SB40170 Base foam and side walls. This allows for safe patient exit/entry.
Fire retardancy:	BS7177; 2008 (Crib 5 Composite)

For full cleaning instructions, please refer to the instructions for use.

UK

Tel: 0845 371 1717

Email: info@medstrom.co.uk

www.medstrom.com

Ireland

Tel: 01 686 9487

Email: info@medstrom.ie

www.medstrom.ie